

THE ULTIMATE VACATION EXPERIENCE



A WARM WELCOME



Chuck Baraw

Chuck Baraw
President



Sheri Baraw Smith

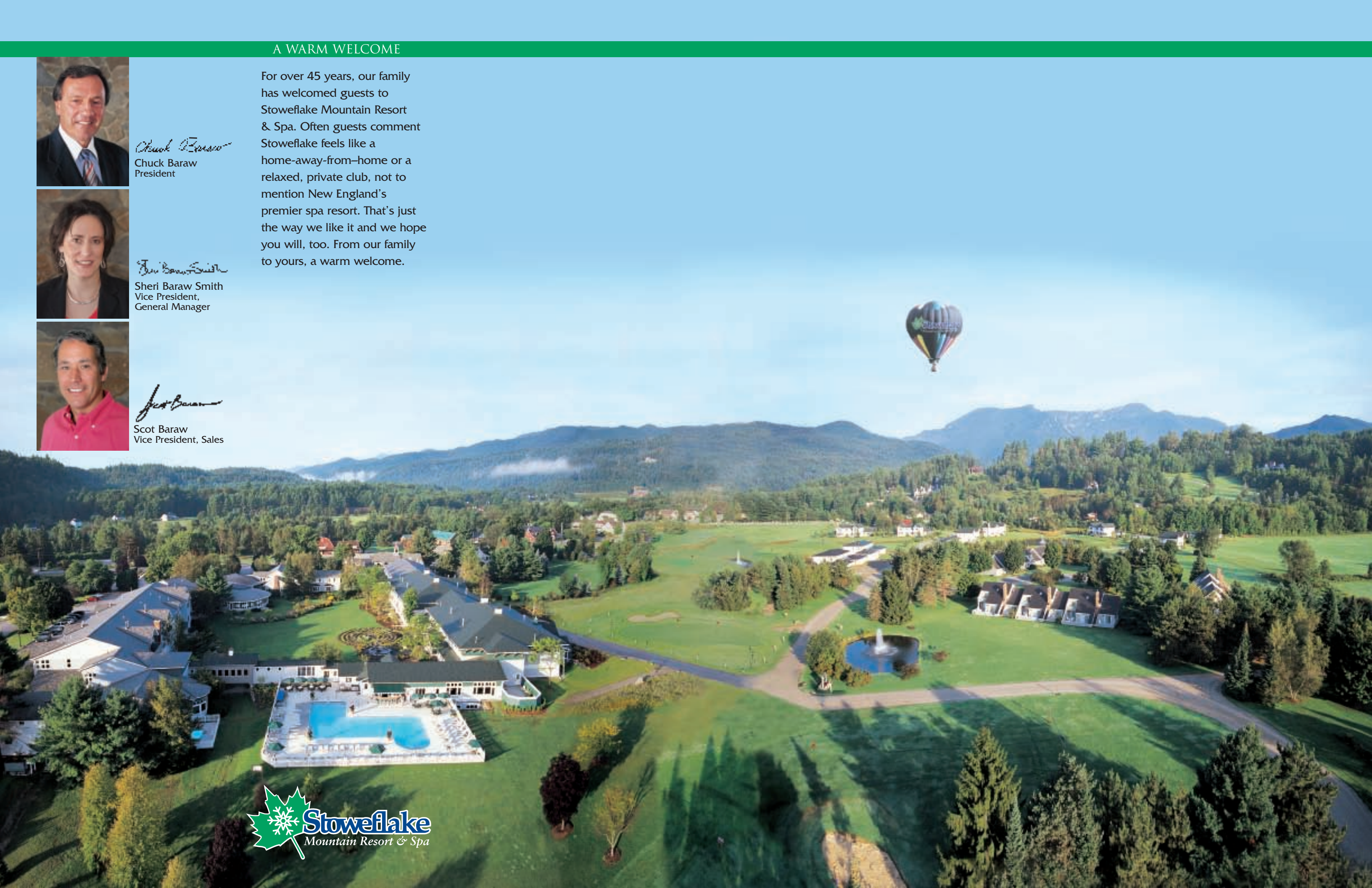
Sheri Baraw Smith
Vice President,
General Manager



Scot Baraw

Scot Baraw
Vice President, Sales

For over 45 years, our family has welcomed guests to Stoweflake Mountain Resort & Spa. Often guests comment Stoweflake feels like a home-away-from-home or a relaxed, private club, not to mention New England's premier spa resort. That's just the way we like it and we hope you will, too. From our family to yours, a warm welcome.



FOUR SEASONS...ENDLESS CHOICES

Stowe is one of America's premier outdoor paradises where each sensational season offers incredible choices for nature lovers and sports enthusiasts. From glorious golf and wilderness hiking in summer to spectacular snowshoe treks and fantastic downhill skiing in winter, Stowe offers endless opportunities for those in search of fun and adventure and all in one of the most scenic and unspoiled environments you'll ever experience.



Stowe, the legendary Ski Capital of the East, is home to Mount Mansfield, Vermont's highest peak, and to over 100 kilometres of interconnecting trails that crisscross through pristine wilderness. Perfect to snowshoe, ski, snowboard, hike, mountain bike or simply sit, contemplate and enjoy.



INSIDE AND OUT...INSPIRING SURROUNDINGS



Surrounded by majestic mountains and panoramic vistas, the views from guestroom windows are simply beautiful. Inside is just as spectacular, too! From luxurious suites and deluxe rooms to spacious, private townhomes, all of our elegant, understated accommodations are superbly decorated and tastefully appointed.

Designed for your comfort and peace of mind, everything you need for the ultimate, carefree vacation is at your fingertips. From the inside out, sensational environments are second nature at Stoweflake.



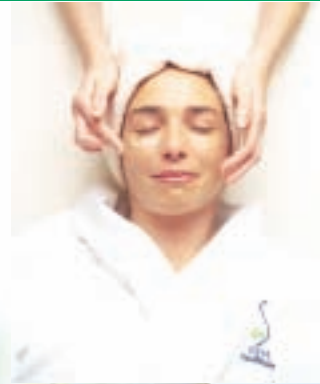
The spacious, luxurious townhouses are ideal for families, reunions, wedding parties and spa groups. Private, yet with all of the amenities and services of a world-class hotel, the townhouses offer a relaxing, deluxe alternative to our hotel accommodations.



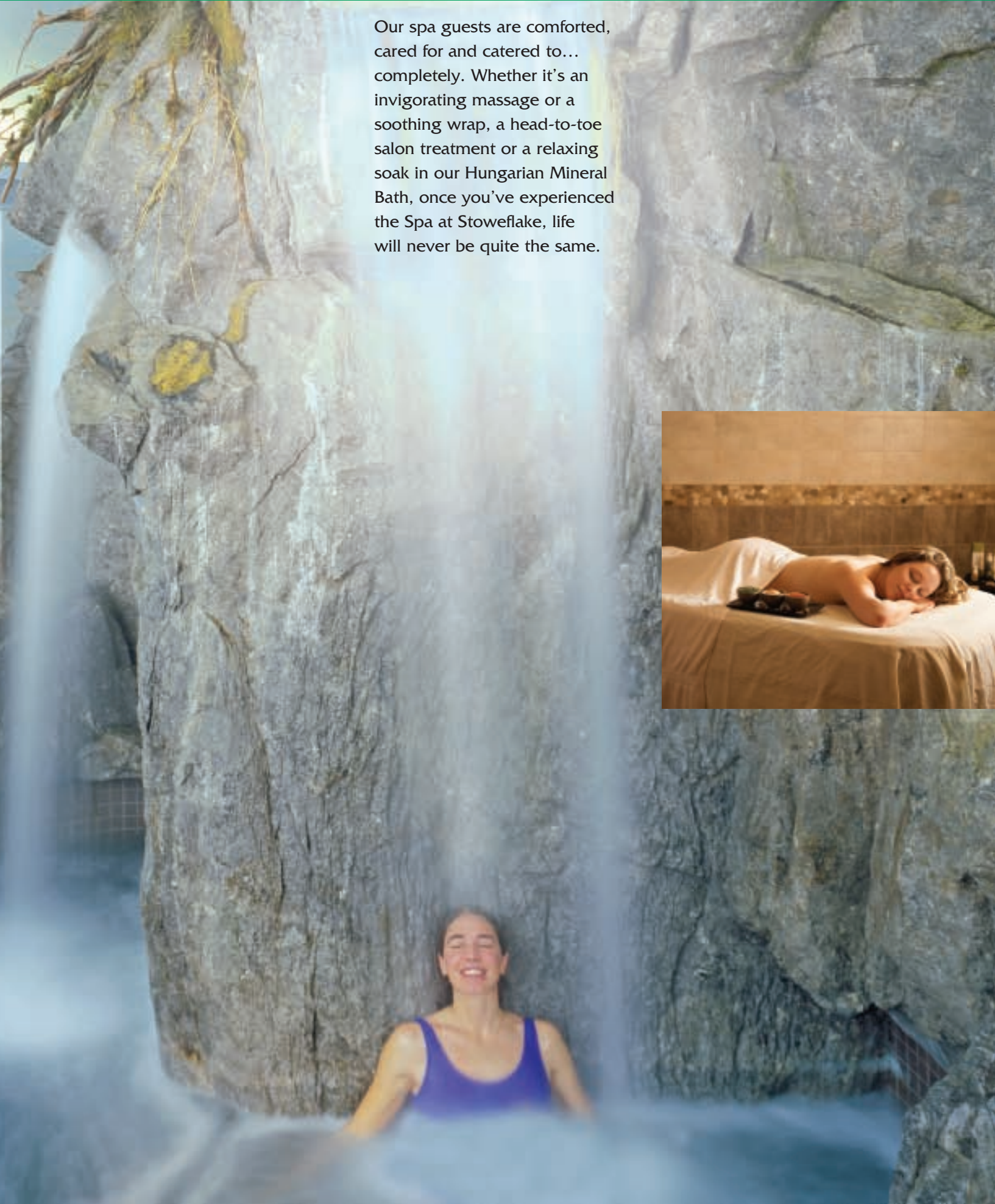
DISCOVER YOURSELF. DISCOVER THE SPA AT STOWEFLAKE



Luxury is more than a beautiful tranquil environment or an exotic spa treatment. It is found in the many small details where nothing is left to chance and your every need is anticipated, then graciously fulfilled. This is one reason why the Spa at Stoweflake is named among America's top ten by *Elle* and *Forbes* Magazines.



Our spa guests are comforted, cared for and catered to... completely. Whether it's an invigorating massage or a soothing wrap, a head-to-toe salon treatment or a relaxing soak in our Hungarian Mineral Bath, once you've experienced the Spa at Stoweflake, life will never be quite the same.



FITNESS... A WONDERFUL WAY OF LIFE

Our terrific exercise facilities at the Sports & Wellness Center make it easy and enjoyable to maintain your total fitness routine. With five private fitness studios and over 60 weekly classes, from Pilates and Nordic Walking to yoga and Spinning™, the rewards of a fuller, healthier life are yours for the choosing. Fitness evaluations, nutritional consultations and a host of personal wellness services provide endless options to help you achieve your personal goals.

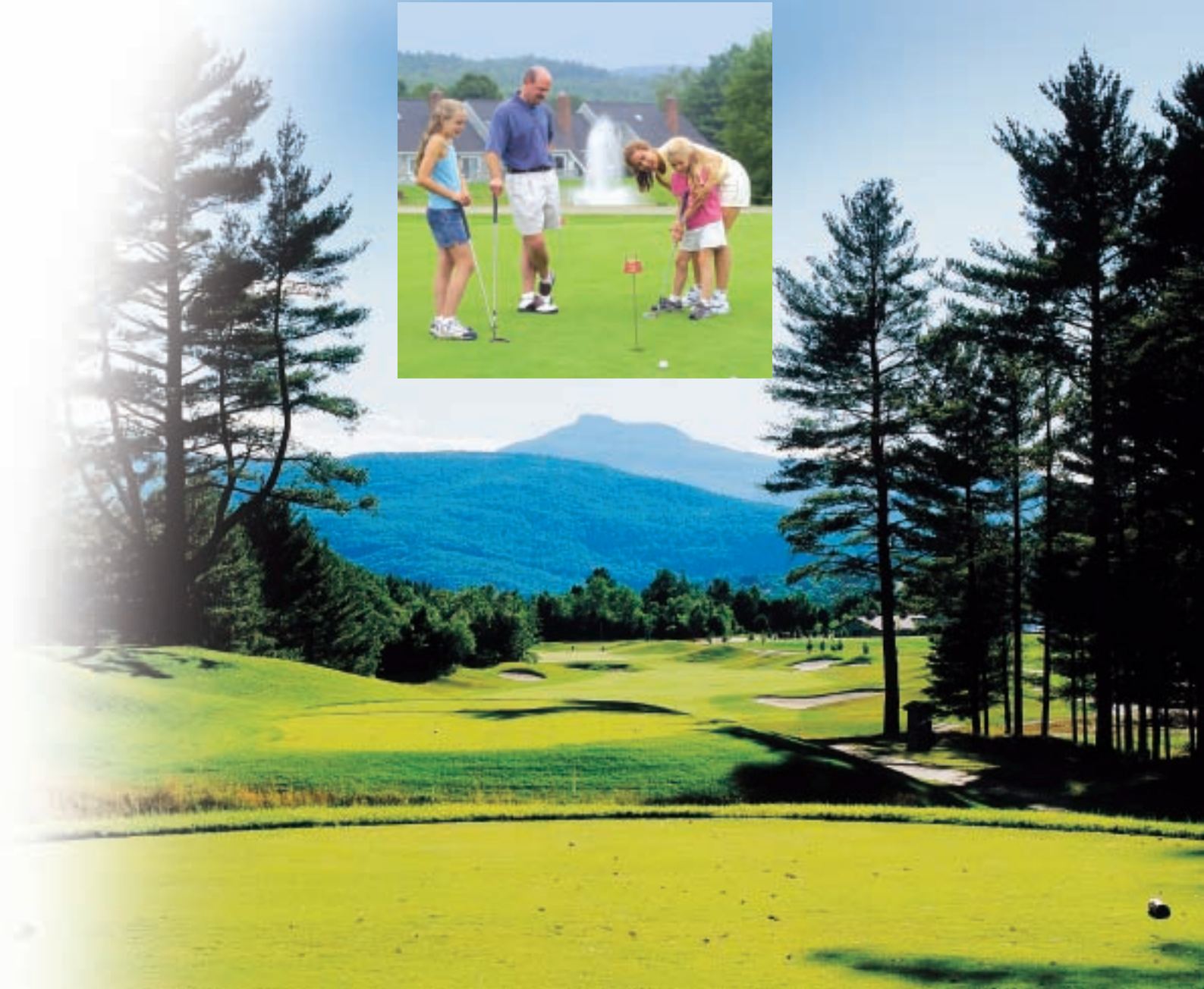


GLORIOUS GOLF



Conveniently located course side to the spectacular Stowe Country Club, Stoweflake offers golfers the best of both worlds, fabulous on-site golf amenities and ready access to one of New England's premier 18-hole championship courses.

With our on-site golf practice facility, nine hole par-three course, putting green and sand trap, few resorts are on par with Stoweflake when it comes to golf.



RECREATION & RELAXATION IN A GLORIOUS SETTING

Everyone needs time to enjoy the good things in life and there is no better place than Stoweflake to do just that. Year-round, guests can marvel at the majestic mountain vistas from the indoor and outdoor pools and hot tub, or enjoy our spa cuisine in the Spa Poolside Café.



Retreat to the serenity of the Meditative Garden with its seven-circuit Labyrinth or to the peaceful spa sanctuary lounges. The pinnacle of relaxation is found in the 120 treatments at the Spa at Stoweflake that soothe the soul, calm the mind and rejuvenate the body.



SENSATIONAL & SAVORY



Dining at Stoweflake is more than a memorable meal, it is an incredible culinary experience. From casual and festive Charlie B's Pub & Restaurant to award-winning Winfield's Bistro, our AAA Four Diamond restaurant, all of the creative combinations are inspired by Vermont's own fresh, seasonal healthy ingredients.



WEDDINGS, SPECIAL EVENTS & CONFERENCES

Few resorts offer the variety and exceptional quality of meeting facilities as Stoweflake. From the intimacy of the romantic Wedding Circle and the sun-filled Atrium to the expanse of the elegant Pinnacle Ballroom with its capacity for 400 guests, Stoweflake caters to groups of all sizes.



Stoweflake is Vermont's venue of choice when it comes to weddings, meetings, and reunions.



1746 Mountain Road, P.O. Box 369, Stowe, VT 05672 USA

800-253-2232 • 802-253-7355 • Fax 802-253-6858

UK Freephone 0500-892-522

info@stoweflake.com

www.stoweflake.com

